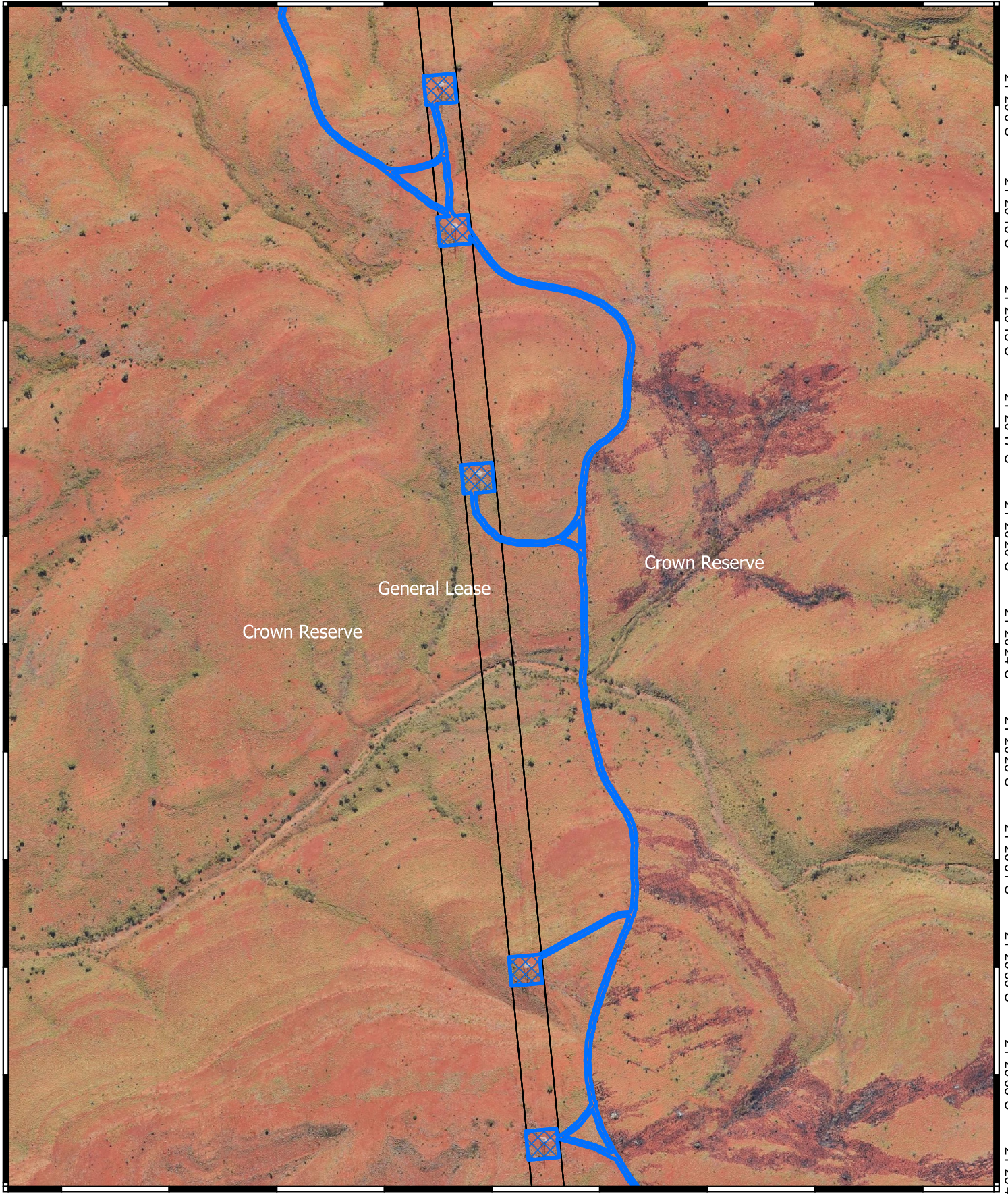


CPS 5887/4 - Map K

117°0'50"E 117°0'54"E 117°0'58"E 117°1'11"E 117°1'15"E 117°1'18"E 117°1'12"E 117°1'16"E 117°1'19"E




21°20'6"S
21°20'10"S
21°20'13"S
21°20'17"S
21°20'20"S
21°20'24"S
21°20'28"S
21°20'31"S
21°20'35"S
21°20'38"S
21°20'42"S

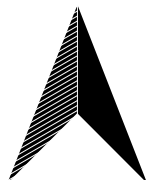
21°20'6"S
21°20'10"S
21°20'13"S
21°20'17"S
21°20'20"S
21°20'24"S
21°20'28"S
21°20'31"S
21°20'35"S
21°20'38"S
21°20'42"S



117°0'50"E 117°0'54"E 117°0'58"E 117°1'11"E 117°1'15"E 117°1'18"E 117°1'12"E 117°1'16"E 117°1'19"E

Legend

-  CPS areas applied to clear
-  Land Tenure (LGATE_226) - SLIP
-  Local Government Authorities



0 25 50 75 m



Projection: GDA 2020

1:4,000



GOVERNMENT OF
WESTERN AUSTRALIA